

Sleepy Eye - Overson Building

SALE

\$414,900
Retail
19,371 SF

Sleepy Eye - Overson Building

121 Second Ave. NE
Sleepy Eye, MN 56085



Property Type:	Retail
Property Use:	Rental or Investment
Year Built:	1997
Zoning:	Commercial
Listing ID:	D57NRR
MLS ID:	440
Style:	Other Style



Sleepy Eye - Overson Building - 121 Second Ave. NE Sleepy Eye MN, 56085 United States

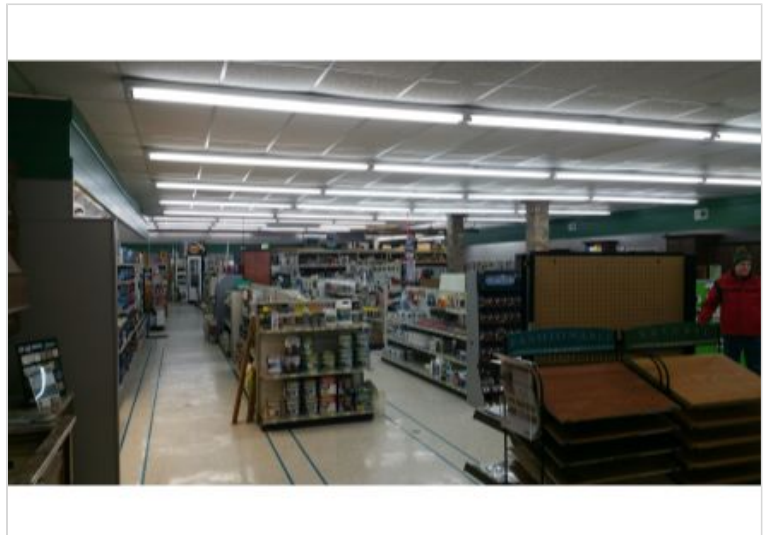
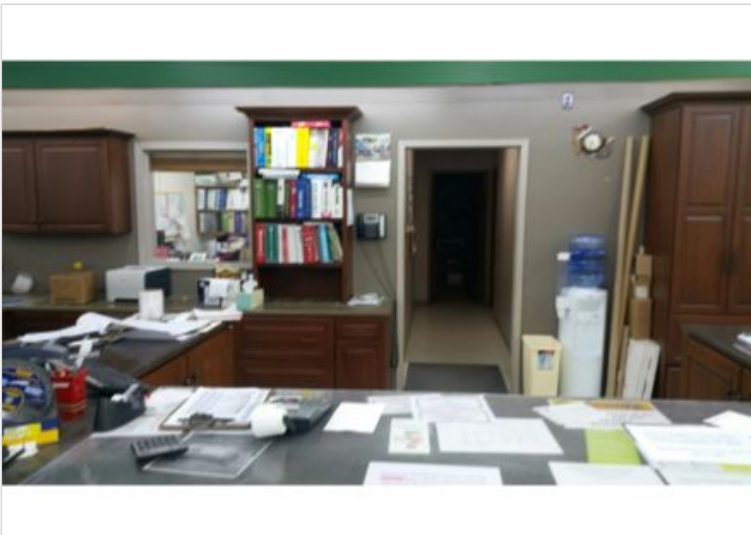
Online Profile <http://www.cbcworldwide.com/properties/profile/D57NRR-SleepyEye-MN>

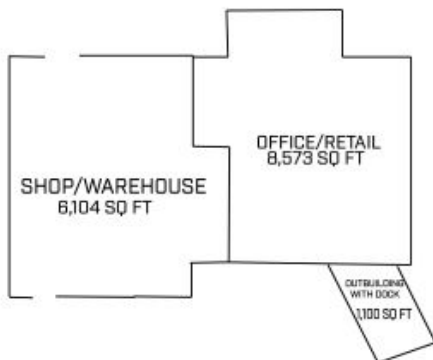
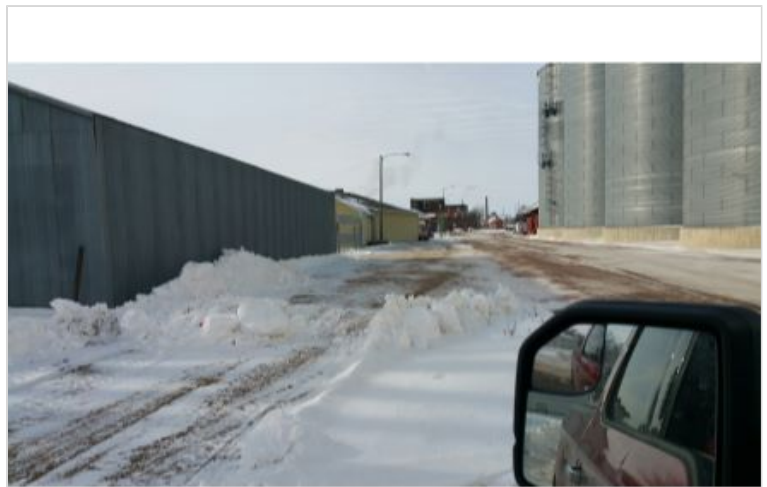
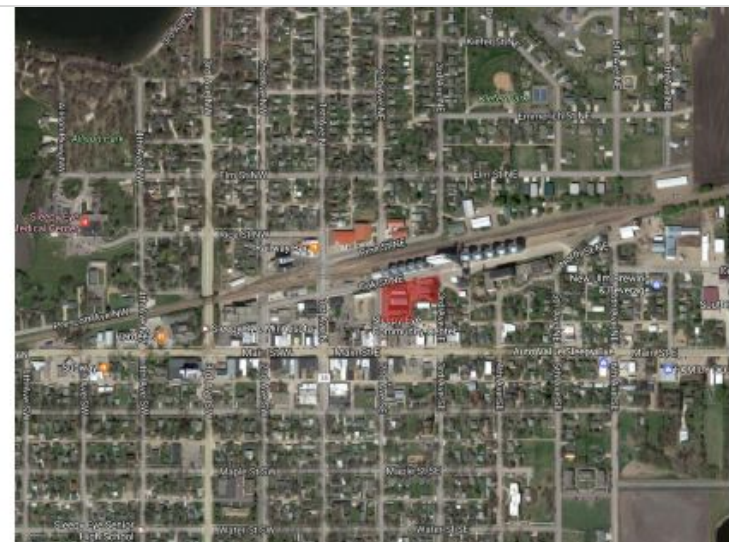
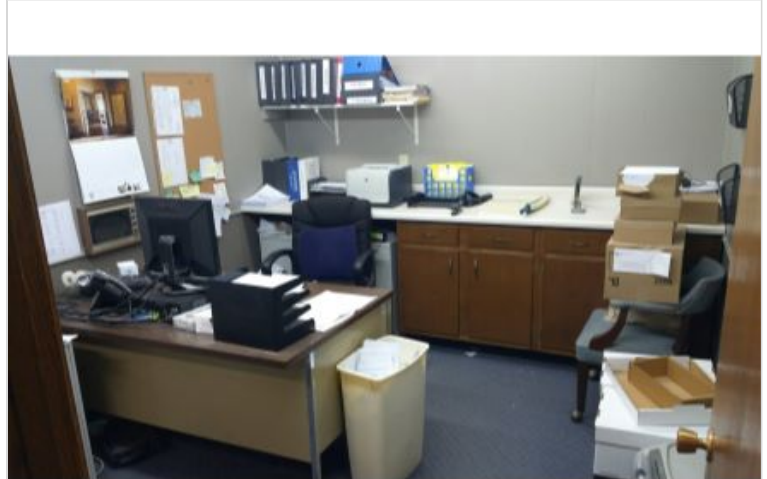
Property Description

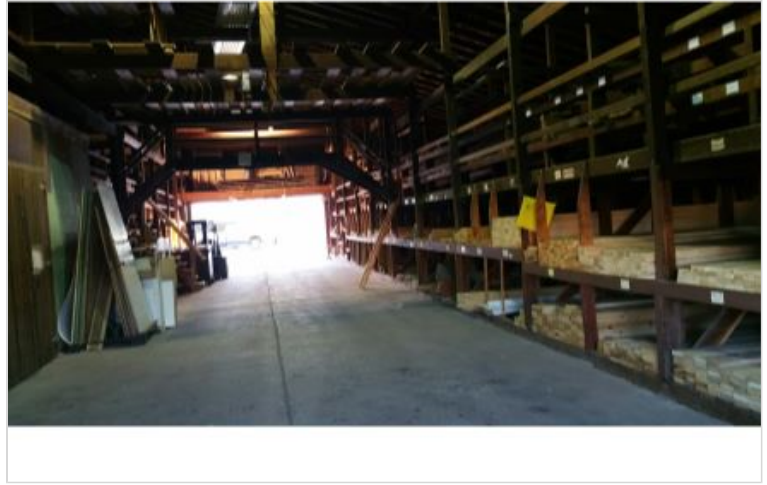
Located in Sleepy Eye, MN this property is currently purposed as a lumberyard facility with a very nice showroom with offices, a shop/warehouse area with concrete flooring and a several outbuildingswith docks and overhead doors.The property is fenced in and has a gravel lot.Great opportunity for new owner to repurpose into new business or othermulti-use facility.

Additional Features

- **Building Size:** 19,371 SF
- **Lot Size:** 23,200 SF
- **Taxes:** \$3,850
- **Zoning:** Commercial







For More Information Please Contact:

James Halbur

Comm Sales Associate

Coldwell Banker Commercial Fisher Group

james.halbur@cbcfishergroup.com

Direct 507-625-0982

Mobile 507-317-2353

<http://www.cbcfishergroup.com/>
507-625-4715

1961 Premier Drive
Suite 404
Mankato, MN 56001

© 2017 Coldwell Banker Real Estate LLC, dba Coldwell Banker Commercial Affiliates. All Rights Reserved. Coldwell Banker Real Estate LLC, dba Coldwell Banker Commercial Affiliates fully supports the principles of the Equal Opportunity Act. Each Office is Independently Owned and Operated. Coldwell Banker Commercial and the Coldwell Banker Commercial Logo are registered service marks owned by Coldwell Banker Real Estate LLC, dba Coldwell Banker Commercial Affiliates. Each sales representative and broker is responsible for complying with any consumer disclosure laws or regulations.